

Everglow

GAS LAMPS & TORCHES

A Division of Modern Home Products

***DISTINCTIVE OUTDOOR
LIGHTING SOLUTIONS***





Everglow lamps and torches are built to last with solid all-aluminum bodies that stand up to the outdoor environment

Everglow Gas Lamps & Torches Add Reliability, Function and Elegance... to Homes or Businesses:

- Maximum eye appeal both night or day
- Increase safety and security
- Adds distinctive styling to any landscape or architecture
- Yellow spectrum of light does not attract insects

Beautiful Durable Finish

- Strict control is maintained throughout production
- The Epoxy powder-coat finish delivers the look and durability you expect

Heat-Treated Glass Panes

- The finest glass available, bringing the lamps to life when lighted
- Remove easily for cleaning

Cast Aluminum Construction

- Thick-walled solid cast aluminum provides greater strength, durability and finish quality
- Non-corrosive construction will not rust

UL Approval

- Gas lamps are UL approved

LAMP HEADS & KITS

Add Ambiance to Your Outdoor Room or Backyard!

By combining a distinctive style with the latest technology and quality materials our lamps bring reliability, function and elegance to your home or business. Appealing both day and night they also provide increased safety and security for your outdoor space. All lamps are available in Natural Gas and Propane Gas with burner options to meet your specific needs.

Model #WK5A-NO

Shown mounted on an aluminum post (#POBA) with an Open Flame burner and optional Ladder Rest (#LR).



GAS LAMP BURNERS

Everglow Gas Lamps are available with three burner options—dual inverted, upright or open flame—allowing you to create the dramatic effect you want for your outdoor space. Available in LP or Natural Gas.



*Dual Inverted Burner
Standard*



*Upright Burner
Optional*



*Open Flame Burner
Optional*

CAST ALUMINUM POST MOUNT LAMP HEADS



HK1A Series
22" H x 10-3/4" W



GG2A Series
22" H x 10-3/4" W



HJ3A Series
22" H x 10-3/4" W



WK5A Series
23" H x 14" W



VK7A Series
24" H x 13-1/2" W

All lamp heads are available in natural or propane gas and are available with the Standard Dual Inverted Burner, Optional Upright Burner or Optional Open Flame Burner.

Natural Gas: 2,500 BTUs | Propane Gas: 2,000 BTUs



Deck/Patio Installation



Combo Pak includes lamp head with on/off brass key, open flame burner, post with copper tubing and electronic ignition for fast starts with the push of a button.



In-ground Installation

DECK/PATIO INSTALLATION COMBO-PAKS

	Lamp Head	Gas	Post Length
HKP	HK1A Series	Natural OR Propane	6'5"
GGP	GG2A Series	Natural OR Propane	6'5"
HJP	HJ3A Series	Natural OR Propane	6'5"

IN-GROUND INSTALLATION COMBO-PAKS

	Lamp Head	Gas	Post Length
HKG	HK1A Series	Natural OR Propane	7'9"
GGG	GG2A Series	Natural OR Propane	7'9"
HJG	HJ3A Series	Natural OR Propane	7'9"

BASES



DPB
Cast Aluminum Base
Fits: 3" OD Post
24" tall, 9" base



ABA
Cast Aluminum Base
Fits: 3" OD Post
15" diameter



PEDBASE
Cast Aluminum Base
Fits post mount lamps
5-7/8" x 5-7/8"

POSTS

Aluminum posts available with or without copper internals. Available in three lengths, 6'5", 7'9" & 10"

LADDER REST

Optional upgrade, must be purchased separately. **Item #LR** 14" long plastic rod with gold decorative round ends.

TORCH HEADS & KITS

Bring the Party to Life!

Our gas fired torch heads are built to last with solid all-aluminum bodies that stand up to the outdoor environment. Available in three different styles, they provide a distinctive and welcoming lighting effect that complements your outdoor entertaining areas while providing increased safety and security. Available for in-ground or deck/patio installations allows you to customize for your specific needs.



Model #LT

Shown mounted on an aluminum post (#POBA)



**THE POLYNESIAN
PT2-N/PT2-P**



**THE FLOWER
FT2-N/FT2-P**



**THE LIBERTY
LT-N/LT-P**

CAST ALUMINUM POST MOUNT TORCH HEADS



THE POLYNESIAN
PT2-N/PT2-P
9" H x 16" W
14,000 BTUs



THE FLOWER
FT2-N/FT2-P
11-1/2" H x 11" W
26,000 BTUs



THE LIBERTY
LT-N/LT-P
13" H x 9" W
45,000 BTUs

All torch heads feature the following:

- Available in natural or propane gas
- No rust solid cast aluminum construction
- Durable electrostatic powder-coated finish
- Solid brass control valve and burner
- 1 year limited warranty

TORCH HEADS COMBO-PAKS

Combo Pak includes:

- Torch head with on/off brass key
- Base (*deck/patio installations only*)
- Post with copper tubing
- Electronic ignition for fast starts with the push of a button



Deck/Patio Installation



In-ground Installation

DECK/PATIO INSTALLATION COMBO-PAKS

	Torch Head	Gas	Post Length
PPBL	Polynesian	Natural OR Propane	6'5"
PFBL	Flower	Natural OR Propane	6'5"

IN-GROUND INSTALLATION COMBO-PAKS

	Torch Head	Gas	Post Length
GPBL	Polynesian	Natural OR Propane	7'9"
GFBL	Flower	Natural OR Propane	7'9"

BASES



DPB
Cast Aluminum Base
Fits: 3" OD Post
24" tall, 9" base



ABA
Cast Aluminum Base
Fits: 3" OD Post
15" diameter



PEDBASE
Cast Aluminum Base
Fits post mount lamps
5-7/8" x 5-7/8"

POSTS

Aluminum posts available with or without copper internals. Available in three lengths, 6'5", 7'9" & 10"

LAMP/TORCH REPLACEMENT PARTS



RE-LITE KIT

DMI-N Natural Gas
DMI-P LP Gas

Includes valve, mixer tube, dual inverted burner head with ceramic tips, 2 mantles and air shutter.



INVERTED BURNER ASSEMBLY

IBA-N Natural Gas
IBA-P LP Gas

Includes burner head with ceramic tips and air shutter. Fits many Charmglow and other brand name lamps.



UPRIGHT BURNER ASSEMBLY

UBA Natural or LP Gas

Includes glass chimney holder and air shutter. *Glass chimney available separately—see CHM.*



BRASS OPEN FLAME BURNER

OFBBR Natural or LP Gas

Imitates the original gas lamp look with fish-tail flame.



AGA CERTIFIED VALVE WITH ORIFICE

GLV-N Natural Gas
GLV-P LP Gas

Fits MHP, Charmglow and many other brand name lamps. 1/4" flare connection.



SOFT INVERTED MANTLES

MTL2

2 mounted on display card. Twin pack.



UPRIGHT MANTLES

MTL3

Fits all standard upright lamps. Priced per mantle. Boxed. Single pack.



GLASS CHIMNEY (FOR UBA)

CHM

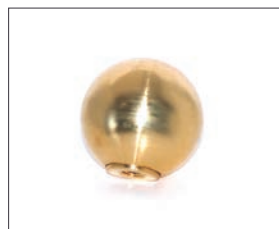
FOR UBA. Fits most other brand name upright burners. 1 3/4" OD top, 3" Bulge, 2" OD bottom, 6" tall.



LADDER REST

LR

Plastic with decorative round ends. 3/4" OD.



BRASS FINIAL

LBF

1" solid brass ball finial.



TEMPERED GLASS PANE

GLS

Resists thermal shock of heat or cold. Fits HK, HJ and GG series, also Charmglow models 300, 1800, 1900, 2000. 4-7/16" wide at bottom 8-5/16" wide at top



TEMPERED GLASS PANE

GLS1

Fits WK-5, VK-7 and Charmglow model 900. 9" high 2-1/8" wide at bottom 4-1/8" wide at top



REPLACEMENT GLASS GLOBE (FOR JK-6A)

GLS2

Also fits Charmglow model 1700. Includes new gasket. 8-5/8" high 4-5/16" bottom OD 8-1/4" top OD



PORCELAIN ELECTRIC SOCKET

PES



BULB MOUNTING BRACKET

BMB

GAS LAMP & TORCH LIMITED WARRANTY

PAINT & GLASS

Modern Home Products Corporation extends a 30 day warranty on paint and glass.

1-YEAR WARRANTY

There is a 1-year warranty from date of purchase against manufacturing defects in material and workmanship to the original purchaser of this product if used for home use within the United States.

MANTLES

Due to their delicate nature there is no warranty on mantles. If this product fails to operate because of a manufacturing defect, the defective part will be repaired or replaced at Modern Home Products Corp. option-If the defective part along with proof of purchase is returned to the original place of purchase or returned postage paid to:

Modern Home Products Corporation
150 South Ram Road
Antioch, Illinois 60002

ALL COMPONENTS

Service, labor and transportation costs are not covered by this warranty. This warranty does not cover defects caused by accidental damage, improper handling, installation, or repairs made by unauthorized persons, and specifically excludes liability for indirect, incidental or consequential damage to property. Some states do not allow the exclusion of consequential damage, so the above exclusions or limitations may not apply to you. This warranty gives you specific rights and you may also have other rights which may vary from state to state.

We reserve the right to change prices and specifications without notice.