



York County
Natural Gas
AUTHORITY

2024 Emergency Response Tabletop Exercise



Goals & Objectives



- Apply the concepts discussed during training sessions
- Serve as a coordination tool for public sector responders and pipeline company personnel
- Exercise interaction with outside parties such as concerned citizens, and the news media

Focus

Scene Size-Up

Development of appropriate strategy and tactics

“Execution” of tactics to initially make the scene safe

Ground Rules

- Everyone needs to actively and realistically participate
- Focus on strategy and tactics development and execution to manage the emergency
- Respect differences of opinion and insights
- Simulate notifications to other outside officials
- Take notes for participation in the end of exercise debrief

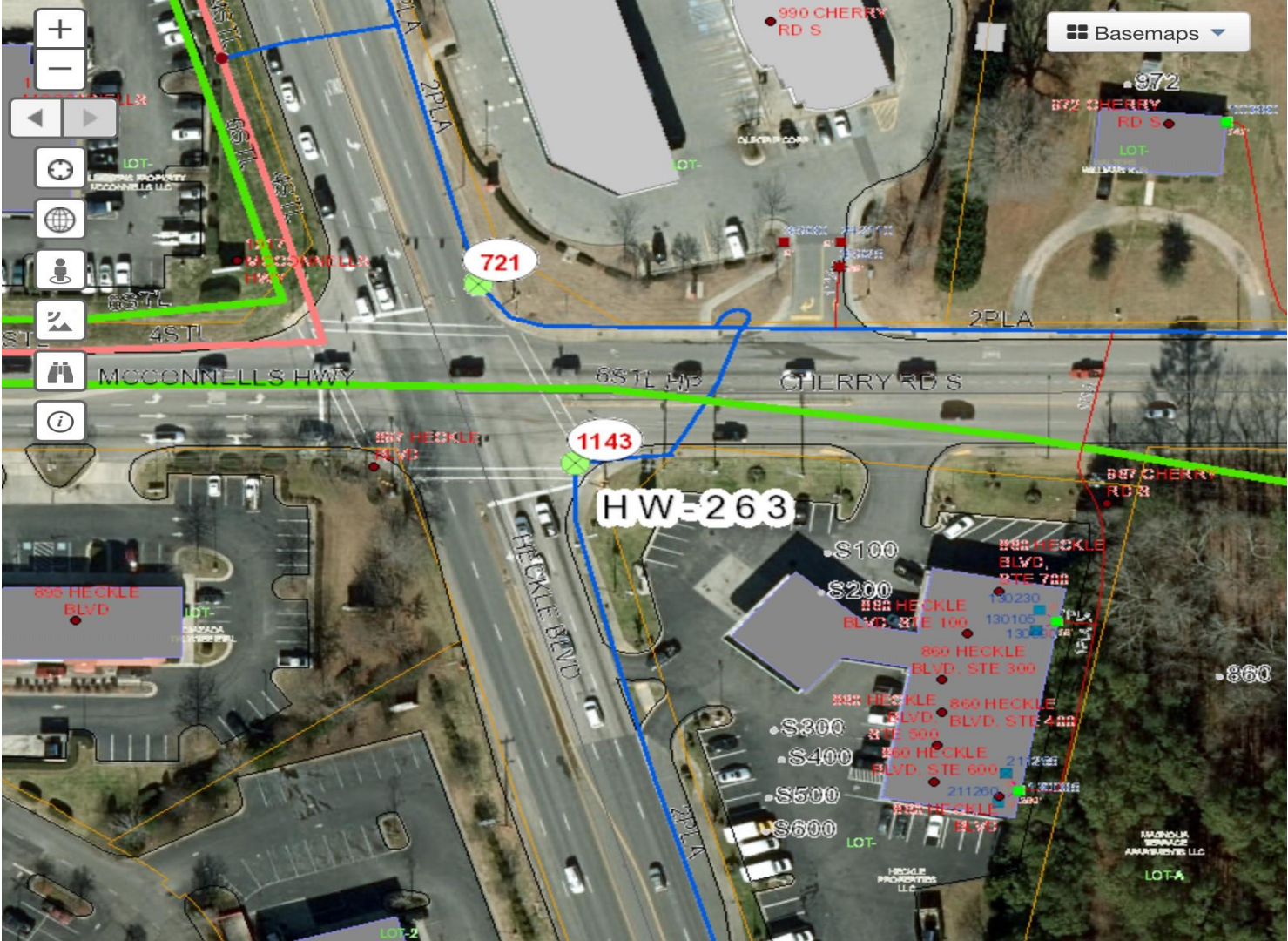


Scenario Overview

- Its' 7:30 a.m. on a Friday morning with cold weather conditions
- Tough Brothers Utility Services is conducting a directional drill operation for fiber installation near the intersection of Heckle Boulevard and Cherry Road
- The drill crew hits a natural gas pipeline and gas begins to escape from the intersection and bore hole
- The operator shuts down the equipment and calls 911 requesting assistance

- Weather is cloudy and the temperature is 28°F
- Winds are from the southwest at 8 mph
- Sleet/freezing rain is forecasted for later in the day





Basemaps

721

1143

HW-263

860

895 HECKLE BLVD

888 HECKLE BLVD, STE 700

\$100

\$200

\$300

\$400

\$500

\$600

130230

130105

211230

211230

211230

211230

211230

211230

211230

872 CHERRY RD S

887 CHERRY RD S

888 HECKLE BLVD, STE 700

888 HECKLE BLVD, STE 100

860 HECKLE BLVD, STE 300

888 HECKLE BLVD, STE 400

860 HECKLE BLVD, STE 600

888 HECKLE BLVD, STE 700

888 HECKLE BLVD, STE 800

888 HECKLE BLVD, STE 900

888 HECKLE BLVD, STE 1000

888 HECKLE BLVD, STE 1100

MCCONNELLS HWY

6STL

CHERRY RD S

HECKLE BLVD

MAGNOLIA SERVICE AREA/BIENVUE LL

LOTA

LOT-

LOT-

LOT-

HECKLE PROPERTIES LLC

4STL

2PLA

2PLA

2PLA

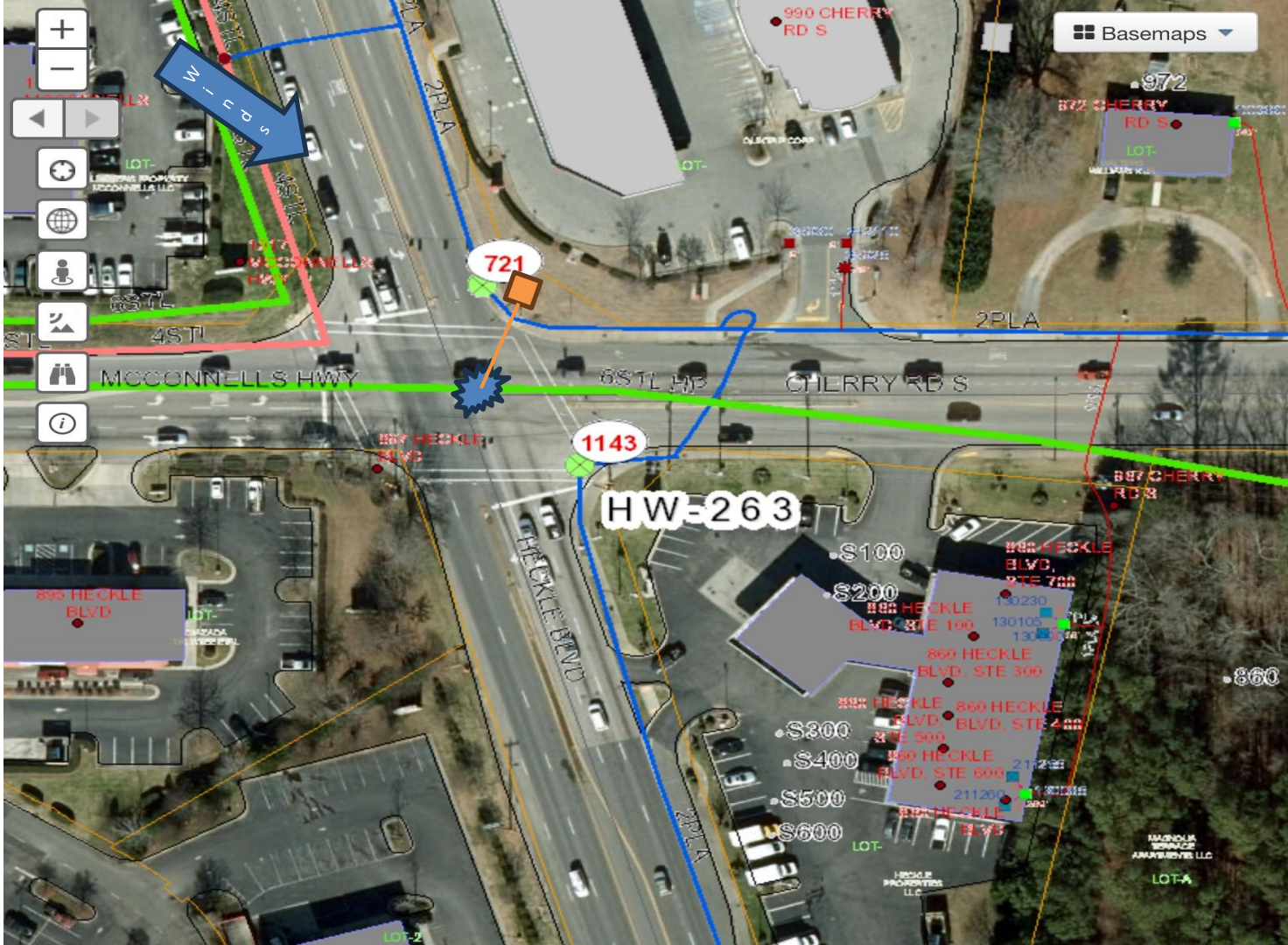




Discussion Points

- What are the results of your scene size-up?
- What resources are needed to isolate the area?
- How large is the area to be isolated?
- Are the weather conditions a factor to be considered?





Discussion Points

- What are the response priorities at this point?
- What resources are needed? How are they assigned based on the response priorities?
- What does the Incident Command System structure look like for this incident?
- What are the safety concerns? Have they changed from the initial report?



Exercise Input 1

- An MVA with entrapment has occurred in the vicinity of 631 South Cherry Road
- Four patients have been assessed – one is code black, two are code red and one is code yellow
- Gasoline is leaking from the tanker and is pooling on the side of the road



Discussion Points

- Based on this additional information what are the response plans at this point?
- What are the strategy and associated tactics based on the incidents?
- What additional resources are needed?



Exercise Input 2

- 911 receives several calls reporting a strong odor of natural gas in and around Finley Apartments located at 810 South York Avenue
- Several reports of gas odor have also been received from the Westover Circle area off of South Cherry Road
- Three residents have requested EMS due to shortness of breath and lightheadedness



Discussion Points

- How are the reports of natural gas odor addressed?
- Given the weather conditions (and forecast) is sheltering a concern?
- What agencies are involved in response to the incidents at this point?



Exercise Input 3

- Television crews from CN2 and WCNC-TV and reporters and photographers from the *Charlotte Observer* have arrived on the scene and are requesting information from the Incident Commander and YCNGA
- “Chopper 9” from WSOC-TV is broadcasting live footage from the scene



Discussion Points

- How are the requests from the media outlets addressed?
- How does the Incident Commander/PIO and YCNGA communicate and coordinate information?



Wrap-Up and Debrief



- Exercise Debrief
- Questions and Answers
- Follow-Up?