



# **Patriots Energy Group Pipeline**

## **Overview of Operations & Emergency Response**

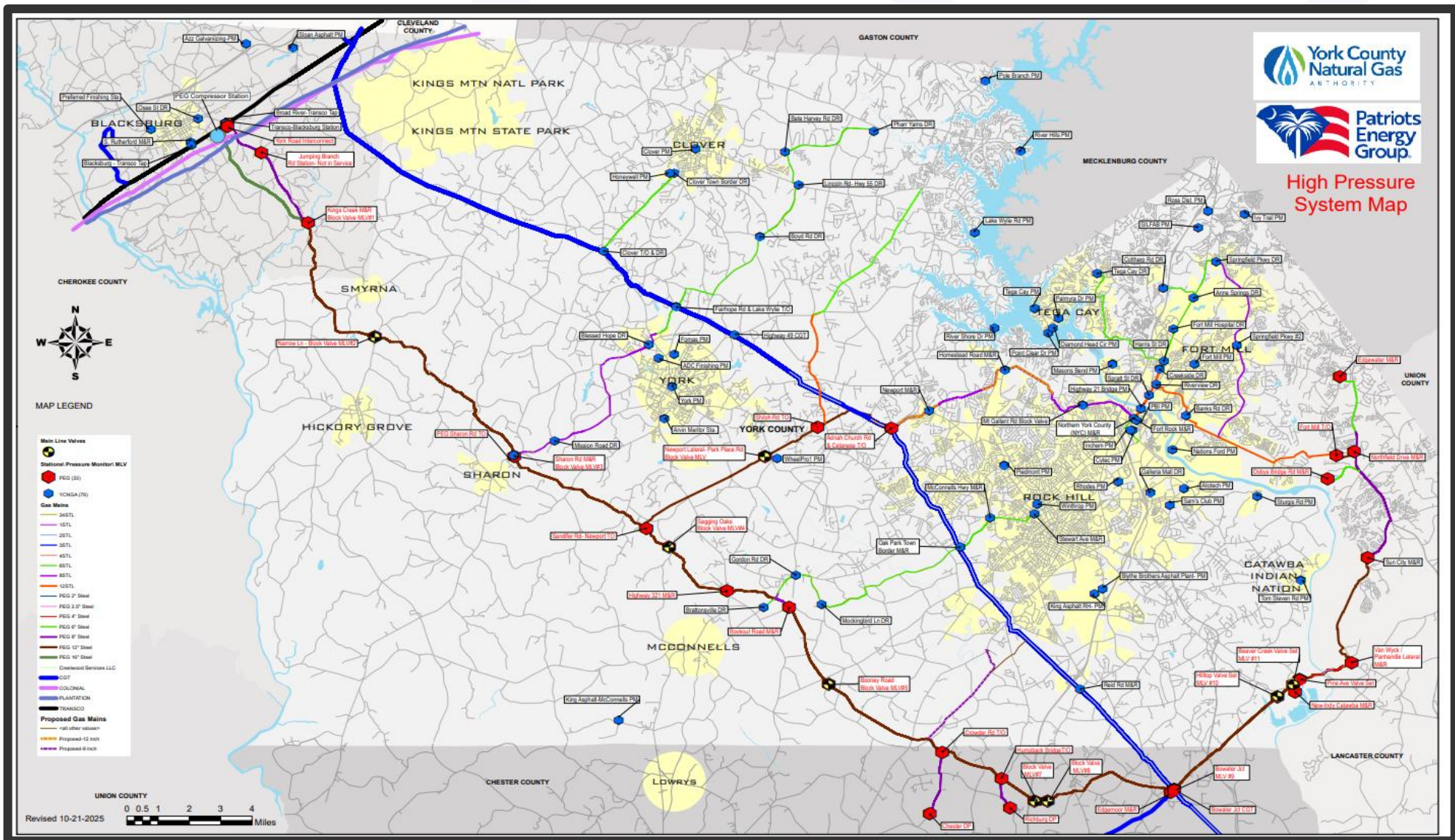
Presented by: YCNGA Team Members

# PEG Overview

- **Patriots Energy Group (PEG) was established as a joint action agency in 2003**
- **Allows the Authorities (LCNGA, CCNGA, YCNGA) to purchase natural gas jointly; providing more reliability and control over supply at a lower cost for customers**
- **Currently provides service to York, Chester, Lancaster, and a portion of Cherokee County**



# System Map



# Basics Facts

- **69 miles of high pressure transmission pipeline with connections to Williams-Transcontinental Pipeline and BHE Carolina Gas Transmission**
- **Pipeline diameters range from 16" to 6" in size**
- **Typical transmission line pressures range from 780 psig at the takeoff to 400psig at Van Wyck Station**
- **Operated and maintained by York County Natural Gas Authority through a long term contract**
- **PEG contracts with the Municipal Gas Authority of Georgia (MGAG) to provide daily gas supply and capacity planning services**

# Operations & Maintenance

- Each major delivery and take-off is remotely monitored
- PEG Pipeline is patrolled at least four times a year (aerial, walking, driving)
- A leak survey of the entire pipeline is conducted on an annual basis
- Corrosion prevention measures are constantly maintained on the pipeline
- Valves, regulators, and other pipeline equipment undergo frequent inspections and maintenance



# Operational Upsets

- Blowing reliefs are operational upsets – not emergencies
- Natural gas is lighter than air and will dissipate quickly
- Never try to valve off or cap a blowing relief
- Call the pipeline operator
- Isolate the area and monitor wind direction



# Right of Way Markers & Signage

- All pipelines are required to be marked with signage that contains:
  - Name of Operator
  - Product being transported
  - Emergency Contact Number
- Pipeline markers are readily visible and contain information needed to reach the operator
- Rights of way are regularly maintained and patrolled



# Right of Way Patrols



**Excavation & Construction**



**Erosion & Washout**



**Obstruction**

# Right of Way Patrols



**Encroachment**



**Vegetation Overgrowth**



**Maintenance Work**

# In-line Inspections



- A method used for checking the condition of pipelines by sending specialized tools, called “smart pigs”, through them to detect defects like corrosion, cracks, and deformation
- Recent PEG in-line inspections conducted:
  - Final run on the 12” completed 11/13/2024
  - Final on the 16” completed 07/30/2025

# York Road Compressor Station



- Located in Blacksburg at the interconnect with Williams/Transco Pipeline
- Remotely monitored and operated by Gas Control in Rock Hill
- Serves as backup location for Gas Control
- Augments pipeline pressures during periods of higher demand
- 3 reciprocating compressors driven by 2,500 h.p. Caterpillar natural gas fueled engines
- Facility has gas/fire detection and water mist extinguishment and remote monitoring
- Staffed during normal business hours

# Gas Control

- **The PEG Pipeline is monitored and controlled 24/7, 365 days a year by qualified and dedicated staff**
- **The Gas Control Facility is located on YCNGA's Campus**



# Damage Prevention



# Damage Prevention

- Damage Prevention is a top priority for PEG
- PEG is a member of SC811 and utilizes a Positive Response System to update locate requests and mark facilities, or provide specific responses to requests
- In addition, to our 811 membership we provide on-going damage prevention training to stakeholders through our Public Awareness Program



← Gas Watch



# Emergency Response



- **PEG/YCNGA Responders are trained in the Incident Command System and Emergency Response Procedures to include coordination with local responders**
- **PEG/YCNGA Responders are equipped with gas detection/monitoring equipment, FR clothing, and SCBAs**
- **PEG/YCNGA Employees regularly participate in full scale mock emergencies – August 2025**

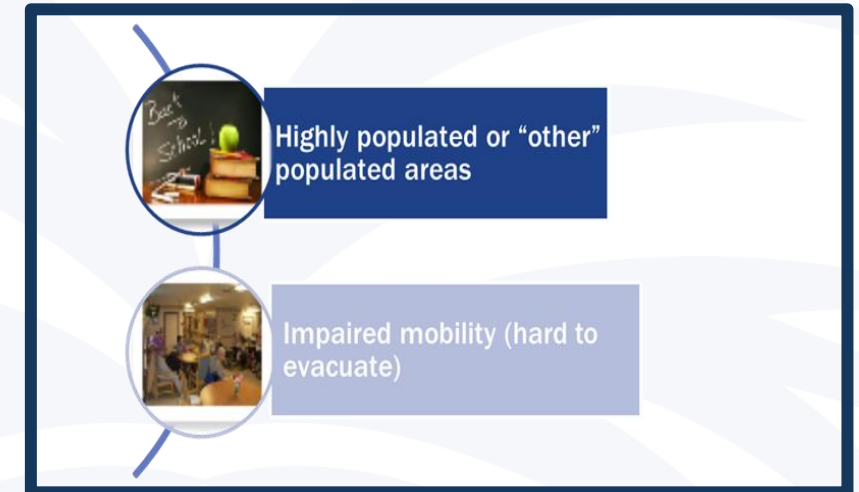
# Emergency Response- Recommendations



- Identify the Pipeline Operator and make the notification
  - **PEG: 888-609-9858**
- Isolate and secure the area
- **Do not operate transmission valves**
- If fire is involved, protect exposures but do not extinguish burning gas fires
- Coordinate media statements

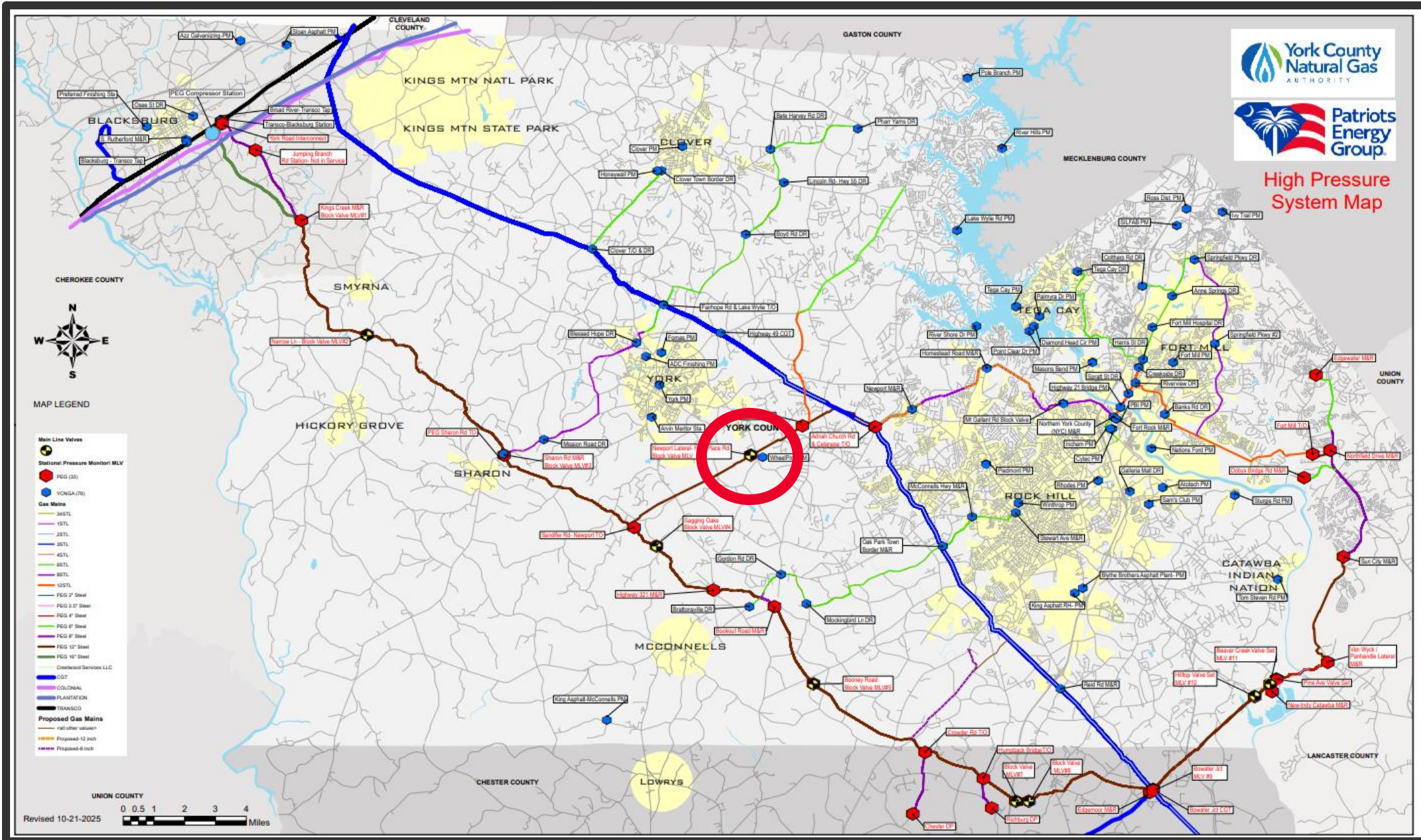
# Transmission Pipeline – High Consequence Areas

- An engineering process used to model the impact to the local area in the event of a pipeline release
- Areas with certain population density (20+ buildings) or those containing identified sites would be deemed HCAs
- Identified Site – areas of congregation (20+ people) or limited mobility, or difficult to evacuate along the pipeline segment





### High Pressure System Map



# Thank You!

## Contact Information

***Trey Dacus***  
***Director of Operations***  
***803-323-5390***  
***trey.dacus@ycnga.com***



***Allie Neal***  
***Safety Manager***  
***803-323-5442***  
***allison.neal@ycnga.com***